



Trust for a flourishing future

SUMITOMO MITSUI TRUST GROUP

Explanatory Material

(Notice regarding Additional Acquisition of Common Shares of SBI Sumishin Net Bank by Sumitomo Mitsui Trust Bank, and the Establishment of Business Alliance among Sumitomo Mitsui Trust Bank, NTT DOCOMO, and SBI Sumishin Net Bank, released on Dec. 19, 2025)

December 19, 2025

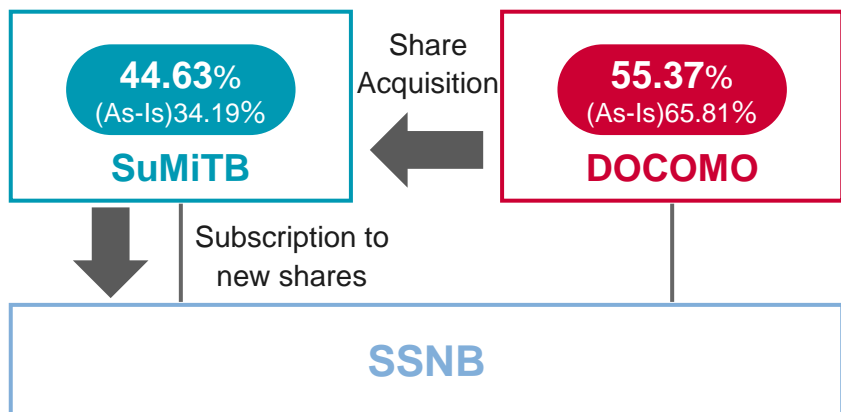
Change of Trade Name

On August 3, 2026, SBI Sumishin Net Bank, Ltd. will change its trade name to DOCOMO SMTB Net Bank, Inc.

Additional Acquisition of Common Shares/Overview of SSNB

Overview of the transaction (shareholding ratio)

- Expected Schedule : December 25, 2025



Financial Impact based on the Assumption

Investment amount	[Share Acquisition] [Subscription to new shares]	Approx. 50bn yen Approx. 30bn yen
Impact on the CET1 ratio*1	Approx. (0.2)%	
Profitability*2	FY28 ROC*3 25% and more	
Profit contribution*2	FY28 20bn yen and more (Before goodwill amortization)	

*1: Basel III finalization fully phased basis *2: Including existing equity investments

*3: Profit before amortization of goodwill and after tax / required capital

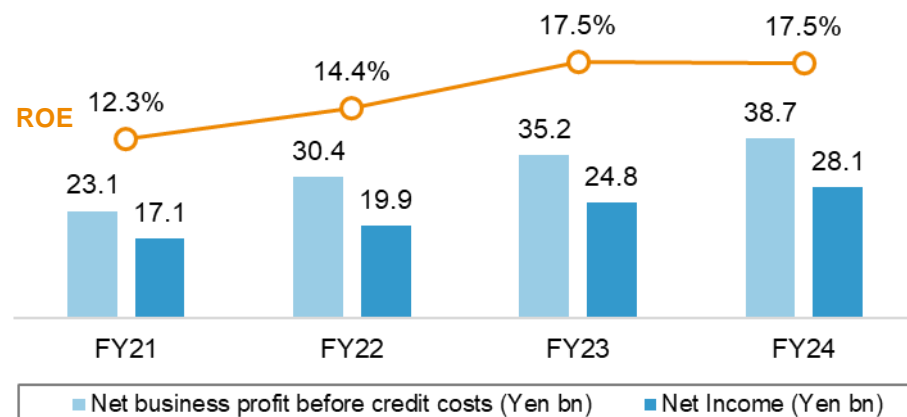
*4: Total of Digital Banking Business and BaaS Business

*5: Managerial reporting basis

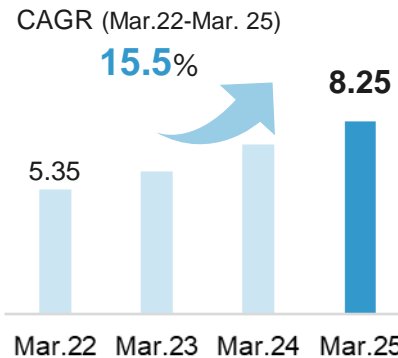
Financial Highlight (SSNB)

- Pursue further ROE enhancement while sustaining robust profit growth

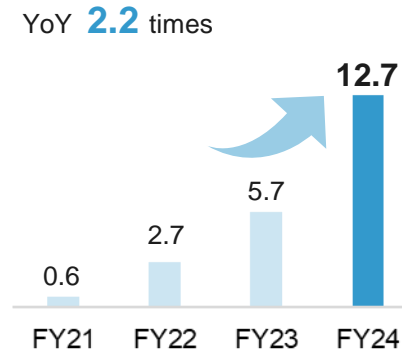
Overview of financial results



Number of accounts*4 (mil)



NEOBANK Revenue*5 (Yen bn)



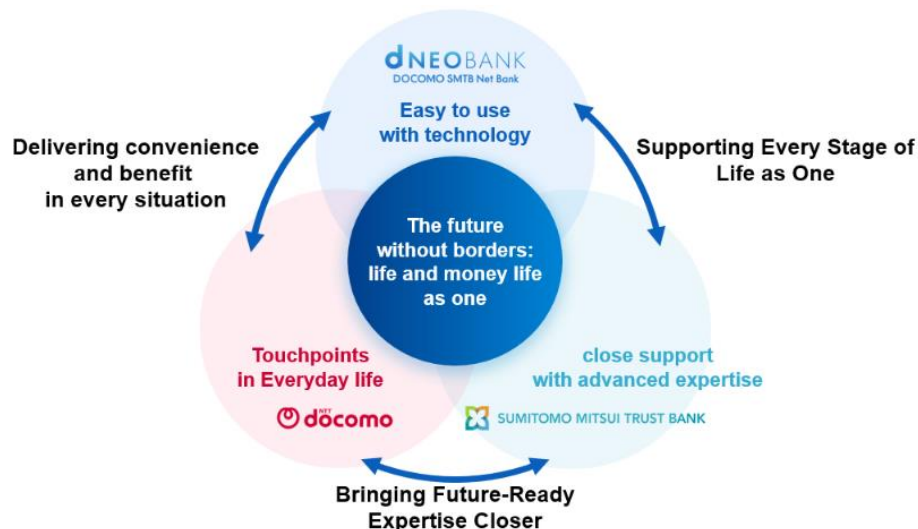
Business Alliance (Overview of the alliance and collaboration with DOCOMO)

Strategic Purpose of Business Alliance

- Aim to further accelerate SSNB's growth with the capital increase, in addition to further promote and deepen this partnership leveraging the additional acquisition as a foundation

- 1 Expansion of Client Base**
- 2 Strengthening Digital Services**
- 3 Efficient Use of the Balance Sheet**

Values the three companies aim to offer



*1: As of Sep. 2025

*2: Point exchange for d-POINTS is scheduled to launch on March 31, 2026

© 2025 SUMITOMO MITSUI TRUST GROUP, INC. All rights reserved.

Collaboration with DOCOMO

1

2

- Exchange accumulated points for d-POINTS using products and services of SuMiTB
- Leverage DOCOMO's digital marketing expertise



Strengths

Number of d-POINTS club Members*1 100 mil people or above

Diverse data sets Subscriber Information Behavioral Data

Initiatives

Jan. 2026-

Collaboration with Smart Life Designer

- Reward Programs convertible to d-POINTS*2

Initiation of a collaboration commemorative campaign for time deposits

- Approach to the DOCOMO economic sphere

FY2026 (Plan)

Collaboration with KABUNUSHI PASSPORT

- Addition of d-POINTS exchange functionality



Explore collaboration in developing new financial products, as well as in asset administration and succession services

Business Alliance (Initiatives with SSNB and its position within the Group)

Enhance collaboration with SSNB

1 2

- Enhance digital client engagement and deliver seamless services across both companies

Services for clients at SuMiTB

Provide daily-use accounts and mortgage loans through NEOBANK



Settlement

Mortgage loans

Services for clients at SSNB

Provide specialized products and services by SuMiTB

Asset management

Real Estate

Will trusts / inheritance

(Reference) Overview of Wealth Management Business

Client segments	Key Companies	Strengths
UHNW	UBS SuMi TRUST Wealth Management	Specialized in solving the issues of HNW
HNW ~ Mass affluent	SUMITOMO MITSUI TRUST BANK	Advanced expertise in the trust business
Upper mass ~ Mass	NEOBANK SBI Sumishin Net Bank	Advanced digital financial services

*: Excluding trust principal and negotiable deposits

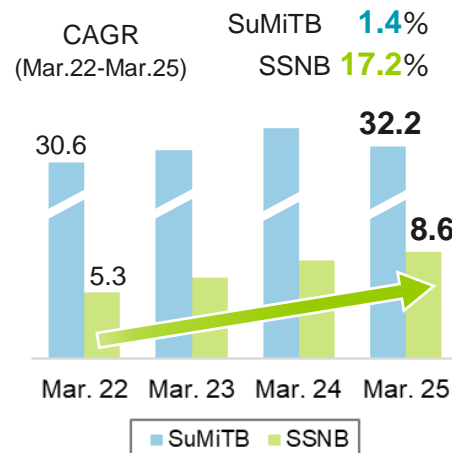
© 2025 SUMITOMO MITSUI TRUST GROUP, INC. All rights reserved.

Efficient use of the B/S across the Group

3

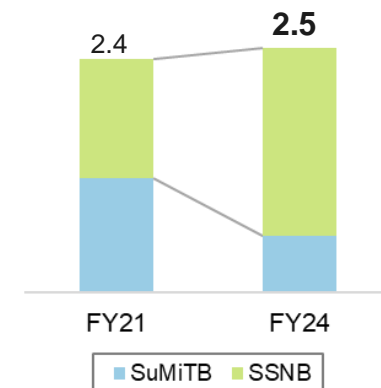
- Contribute to enhance ROE through differentiated B/S strategies

Loan balance (Yen trn)

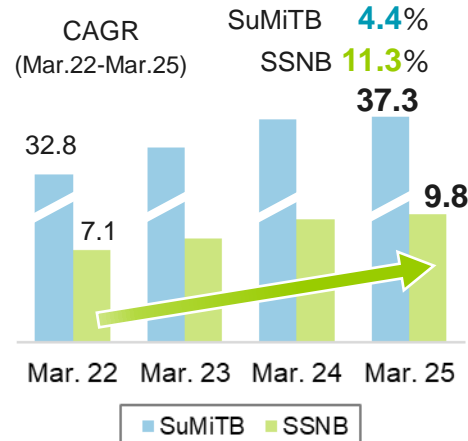


Annual amount of mortgage loans (Yen trn)

Optimization within the Group

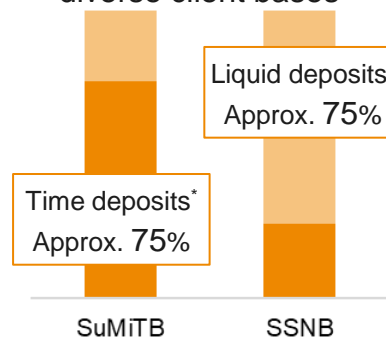


Deposit balance (Yen trn)



Deposit Structure (As of Mar. 2025)

Distinctive funding from diverse client bases



This presentation material contains information that constitutes forward-looking statements. Such forward-looking statements are not guarantees of future performance and involve risks and uncertainties, and actual results may differ from those in the forward-looking statements as a result of various factors including changes in managerial circumstances. This material includes summary figures that have not been audited so the numbers may change. Please refer to the most recent relevant materials including financial results (“Kessan Tanshin”)(including attached explanatory materials), the securities report and other presentations disclosed by Sumitomo Mitsui Trust Group and its group companies, for further information that could significantly influence its financial position and operating results as well as investment decisions by investors. Information regarding companies and other entities outside the group in this document has been obtained from publicly available information and other sources. The accuracy and appropriateness of that information has not been verified by the group and cannot be guaranteed. This presentation does not constitute an offer to sell or a solicitation of an offer to subscribe for or purchase any securities.

Definitions of terms in this document

Sumitomo Mitsui Trust Group (Consolidated): “SuMiTG”

Sumitomo Mitsui Trust Bank (Non-consolidated): “SuMiTB”

NTT DOCOMO: “DOCOMO”

SBI Sumishin Net Bank: “SSNB”

Net income (on consolidated basis): “Net income attributable to owners of the parent”