

May 18, 2007

To whom it may concern:

Name of listed company: Mitsui Trust Holdings, Inc.

President: Kazuo Tanabe

Code No.: 8309

The Chuo Mitsui Trust and Banking Company, Limited

Mitsui Asset Trust and Banking Company, Limited

**Notice Concerning Reorganization within the Group and Changes in Trade Names of Mitsui Trust Holdings, Inc. and Mitsui Asset Trust and Banking Company, Limited**

Mitsui Trust Holdings, Inc. (Mitsui Trust) hereby announces that it has passed a resolution at the Board of Directors' meeting held today pursuant to which its two asset management affiliates (Chuo Mitsui Asset Management Company, Limited and Chuo Mitsui Capital Company Limited), which are currently subsidiaries of The Chuo Mitsui Trust and Banking Company, Limited (Chuo Mitsui), which is Mitsui Trust's trust bank subsidiary, will become Mitsui Trust's direct wholly-owned subsidiaries in a measure designed to further strengthen its Group management.

At the same time, in order to strengthen the Group's brand awareness, a resolution was passed to submit a proposal to Mitsui Trust's Sixth General Meeting of Shareholders scheduled on June 28 to change its trade name from "Mitsui Trust Holdings, Inc." to "Chuo Mitsui Trust Holdings, Inc."

It has also been resolved that the trade name of Mitsui Trust's trust bank subsidiary "Mitsui Asset Trust and Banking Company, Limited" (Mitsui Asset) be changed to "Chuo Mitsui Asset Trust and Banking Company, Limited" from the viewpoint of Group brand unity, subject to the approval of the relevant authorities.

1. Concerning reorganization within the Group (Making two asset management indirect subsidiaries into direct subsidiaries of Mitsui Trust)

- (1) Purpose of making the two indirect subsidiaries into direct subsidiaries

The Group has been strengthening its asset management-related businesses such as investment trust-related and private equity-related services, in an effort to capitalize on the asset management expertise it has acquired as a trust and banking group.

The Group is planning to further strengthen its asset management-related businesses. To

realize this goal, the Group recognizes that it is important to establish an organizational structure in which strategic business operations can be developed, and to bolster its internal control system.

Based on this view, Mitsui Trust has decided to make Chuo Mitsui Asset Management Company, Limited (which engages in investment trust management services) and Chuo Mitsui Capital Company Limited (private equity fund management services), which are currently subsidiaries of Chuo Mitsui, into direct subsidiary of Mitsui Trust.

Following this change, Mitsui Trust will have direct wholly-owned subsidiaries consisting of two trust banks (Chuo Mitsui and Mitsui Asset), which provide distinctive services, and two asset management companies (Chuo Mitsui Asset Management Company, Limited and Chuo Mitsui Capital Company Limited).

(2) Method of conversion into direct wholly-owned subsidiaries, etc.

a. Profile of target corporations

	Chuo Mitsui Asset Management Company, Limited	Chuo Mitsui Capital Company Limited
Date of Establishment	September 19, 1986	March 1, 2000
Registered Head Office	3-23-1 Shiba, Minato-ku, Tokyo	3-2-8 Nihonbashi-Muromachi, Chuo-ku, Tokyo
President	Yoshinobu Tsumori	Hideo Natori
Capital Stock	300 million yen	497 million yen
Services	Investment Trust Management Services	Private Equity Fund Management Services
Shareholders	The Chuo Mitsui Trust and Banking Company, Limited 50% Chuo Mitsui Guarantee Company, Limited 25% Chuo Mitsui Card Company, Limited 25%	The Chuo Mitsui Trust and Banking Company, Limited 100%
Results	Fiscal Term	March 2007
	Total Revenue	10,350 million yen
	Net Income	842 million yen
Other Index for Reference	Balance of Investment Trust under Management Approx. 2,230 billion yen	Balance of Fund under Management Approx. 110 billion yen

b. Method of conversion into direct wholly-owned subsidiaries

A method is being considered in which Mitsui Trust will purchase in cash directly from the current shareholders.

c. Date to convert into direct wholly-owned subsidiaries

Conversion is scheduled for October 1, 2007.

2. Concerning changes in trade names of Mitsui Trust and Mitsui Asset, etc.

(1) Purpose of Changes in trade names

Mitsui Trust has decided to unify its Group brand into the “Chuo Mitsui” brand, a name that has

become well known with many clients through its retail services, with the aim of strengthening its brand awareness, by taking the opportunity of the above conversion of two asset management affiliates into direct wholly-owned subsidiaries of Mitsui Trust.

Based on this view, the trade names of Mitsui Trust and Mitsui Asset will be changed into names starting with “Chuo Mitsui”.

(2) Content of Changes in trade names

a. Content of change in trade name of Mitsui Trust

It is scheduled for trade name to be changed as follows, subject to the approval of the shareholders at the General Shareholders’ Meeting.

(a) Trade Name in Japanese

“Mitsui Trust Holdings Kabushiki Kaisha” will become “Chuo Mitsui Trust Holdings Kabushiki Kaisha”.

(b) Trade Name in English

“Mitsui Trust Holdings, Inc.” will be changed to “Chuo Mitsui Trust Holdings, Inc.”

b. Content of change in Trade Name of Mitsui Asset

It is scheduled for the trade names to be changed as follows, subject to the approval of the relevant authorities.

(a) Trade Name in Japanese

“Mitsui Asset Shintaku Ginkou Kabushiki Kaisha” will be changed to “Chuo Mitsui Asset Shintaku Ginkou Kabushiki Kaisha”

(b) Trade Name in English

“Mitsui Asset Trust and Banking Company, Limited” will be changed to “Chuo Mitsui Asset Trust and Banking Company, Limited”.

(3) Concerning Group Brand

While the Group has thus far been using “Mitsui Trust Financial Group” as its Group brand name, it plans to use “Chuo Mitsui Trust Group” as its new Group brand name, taking the opportunity of the change in trade name of Mitsui Trust, the Group’s holding company.

(4) Date of Change in Trade Names

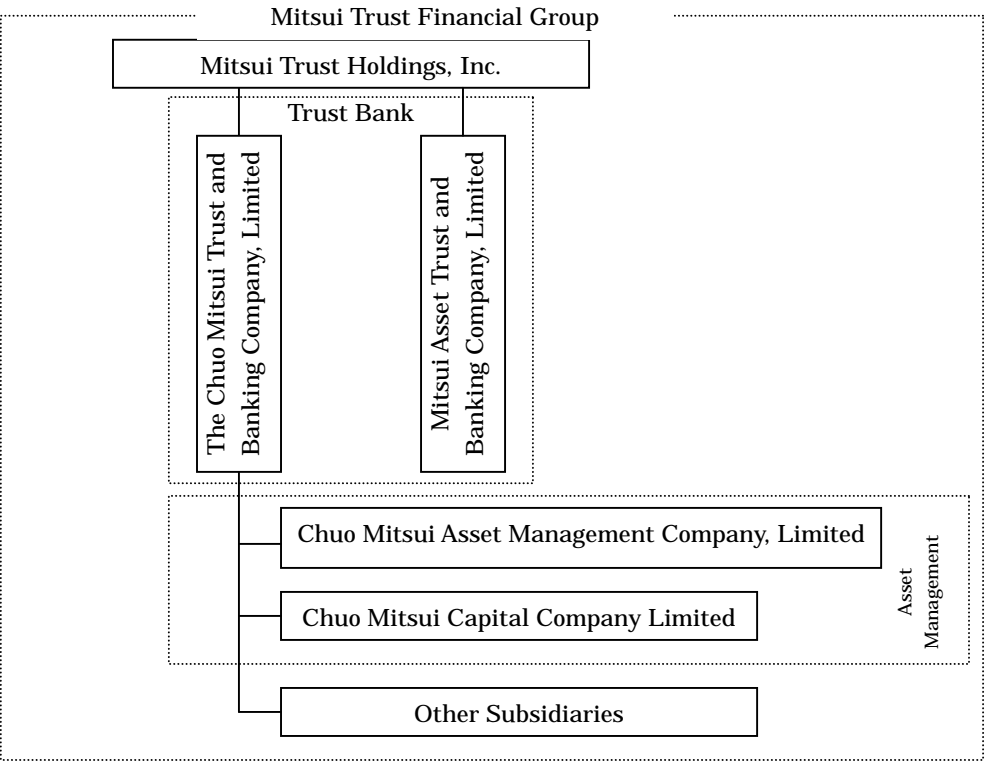
The change is scheduled for October 1, 2007.

(5) Other Additional Measures

Each Group company will consider and implement various measures so that its stakeholders may understand “Chuo Mitsui Trust Group” more deeply.

Reference: Outline of the Group Structure and Changes in Trade Names

Current Status



After Reorganization (Scheduled for October 1, 2007)

