

# Board of Directors and Executive Officers (As of July 1, 2025)

Director ( <i>Kaicho</i> ) Tetsuo Ohkubo	Director (External) Kazuo Sakakibara* <sup>1</sup>	Executive Officer Yoshio Hishida	Executive Officer Natsuhiko Yonezawa
Director, President (Representative Executive Officer) Toru Takakura	Senior Managing Executive Officer, Executive Officer Manatomo Yoneyama	Executive Officer Nobuaki Yamaguchi	Executive Officer Sanjiro Okamatsu
Director, Senior Managing Executive Officer (Representative Executive Officer) Masakatsu Sato	Managing Executive Officer Atsushi Matsumoto	Executive Officer Futoshi Itani	Executive Officer Kenichi Kajihara
Director, Managing Executive Officer Chikako Matsumoto	Managing Executive Officer Takumi Fujisawa	Executive Officer Junya Ueda	Executive Officer Munemitsu Takanabe
Director Kouichi Kato	Managing Executive Officer Riro Sato	Executive Officer Nobuhisa Takahashi	Audit Dedicated Executive Officer Toshiaki Nakano
Director (External) Isao Matsushita* <sup>1</sup>	Managing Executive Officer, Executive Officer Masanori Watanabe	Executive Officer Takehiko Sakau	
Director (External) Hiroko Kawamoto* <sup>1</sup>	Managing Executive Officer Naoki Ishibe	Executive Officer Kazuteru Wakao	
Director (External) Nobuaki Kato* <sup>1</sup>	Managing Executive Officer Takahiro Yoshida	Executive Officer Kiyotaka Maita	
Director (External) Kaoru Kashima* <sup>1</sup>	Managing Executive Officer, Executive Officer Hisato Nakano	Executive Officer Tomoya Hirano	
Director (External) Tomonori Ito* <sup>1</sup>	Executive Officer* <sup>2</sup> Kazuya Oyama	Executive Officer Yasuhiro Takeyama	
Director (External) Hajime Watanabe* <sup>1</sup>	Executive Officer* <sup>2</sup> Yuuko Nishigaya	Executive Officer Tadashi Ejima	
Director (External) Hirokazu Fujita* <sup>1</sup>			

\*1 External Directors as provided for in Article 2, Item 15 of the Companies Act.

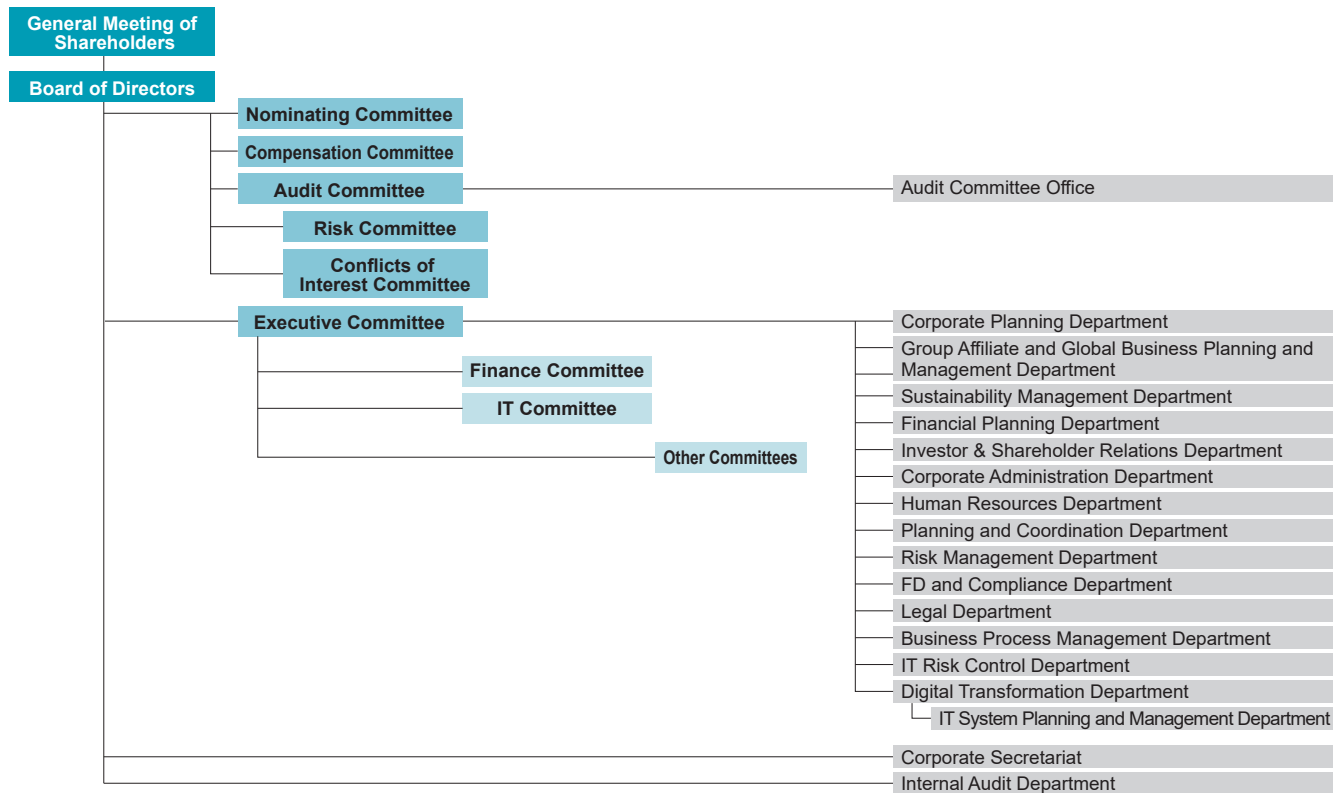
\*2 Executive Officers as defined in the Companies Act. Unless otherwise annotated, Executive Officers are defined in our internal policy.

## Employees (As of March 31, 2025)

Category	March 31, 2025	March 31, 2024
Number of Employees	273	283
Average Age	48 years, 9 months	50 years, 0 months
Average Length of Employment	21 years, 5 months	21 years, 7 months
Average Annual Salary	¥13,507 thousand	¥13,040 thousand

Notes: 1. The number of employees indicates total personnel, etc., excluding employees seconded to other companies and temporary and part-time staff.  
2. Employees include those seconded from SuMi TRUST Bank and the average length of employment includes years of employment at their own companies.  
3. Average annual salary includes bonus and extra payment.

# Organizational Chart (As of June 30, 2025)



## Subsidiaries and Affiliated Companies (As of June 30, 2025)

### Japan

Name	Location	Date of Establishment	Paid-in Capital (Millions)	Scope of Business	Ownership by SuMi TRUST Group (%)	Ownership by subsidiaries (%)
Sumitomo Mitsui Trust Bank, Limited	4-1, Marunouchi 1-chome, Chiyoda-ku, Tokyo	July 28, 1925	¥342,037	Trust and Banking Business	100.0	—
Sumitomo Mitsui Trust Asset Management Co., Ltd.	1-1, Shibakoen 1-chome, Minato-ku, Tokyo	November 1, 1986	¥ 2,000	Investment Management Business, Investment Advisory and Agency Business	100.0	—
Sumitomo Mitsui Trust Research Institute Co., Ltd.	33-1, Shiba 3-chome, Minato-ku, Tokyo	July 1, 1988	¥ 300	Survey, Research, Consulting, Investment Advisory Business	100.0	—
Trust Base Co., Ltd.	6-1, Otemachi 1-chome, Chiyoda-ku, Tokyo	April 1, 2021	¥ 100	Survey, Research, Consulting	100.0	—
Nikko Asset Management Co., Ltd.*	7-1, Akasaka 9-chome, Minato-ku, Tokyo	December 1, 1959	¥ 17,363	Investment Management Business, Investment Advisory and Agency Business	99.0	0.9
Mutual Fund & Insurance Research Institute	33-1, Shiba 3-chome, Minato-ku, Tokyo	December 1, 2017	¥ 150	Survey, Research, Consulting	88.0	—
UBS SuMi TRUST Wealth Management Co., Ltd.	4-1, Marunouchi 1-chome, Chiyoda-ku, Tokyo	May 1, 2020	¥ 5,165	Securities business, Trust agreement agency services	49.0	—
Custody Bank of Japan, Ltd.	8-12, Harumi 1-chome, Chuo-ku, Tokyo	June 20, 2000	¥ 51,000	Trust and Banking Business	33.3	—

\* Nikko Asset Management Co., Ltd. will change its trade name to "Amova Asset Management Co., Ltd.," effective September 1, 2025.

Note: For details concerning subsidiaries and affiliated companies of SuMi TRUST Bank, please refer to page 13.