

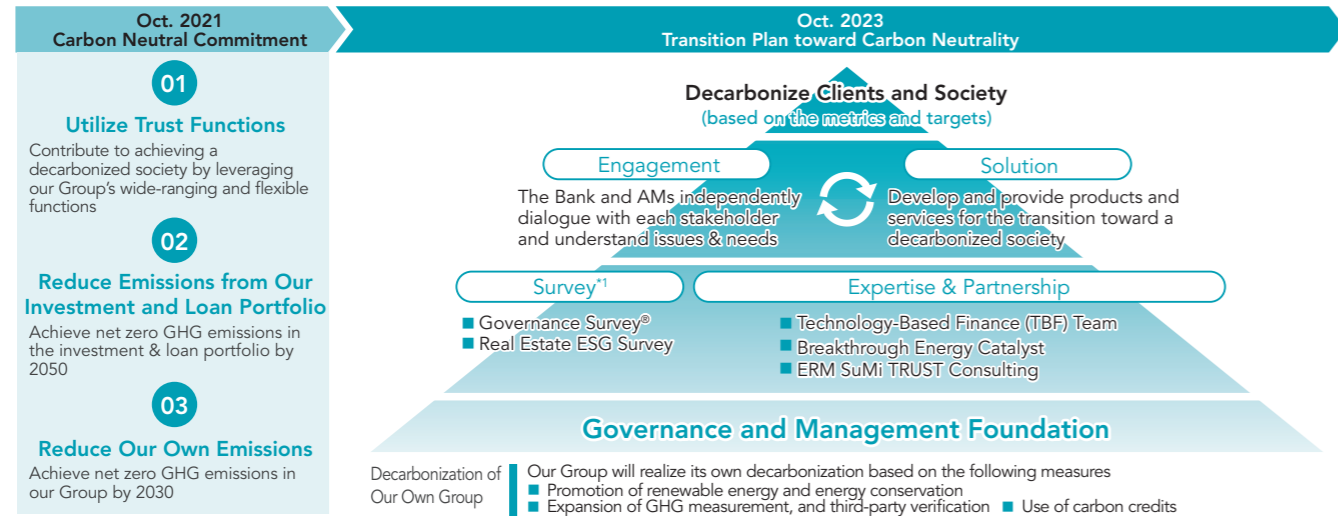
Response to Climate Change

1. Transition Plan toward Carbon Neutrality

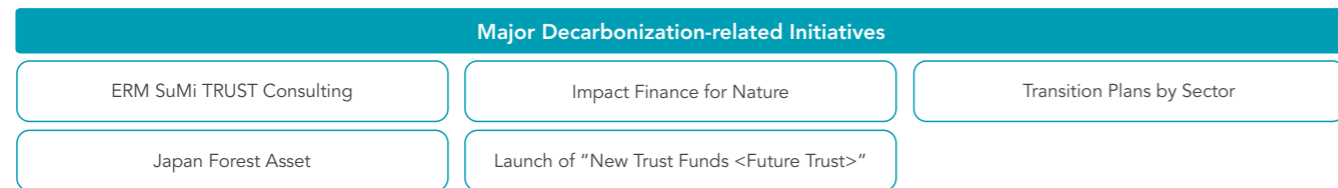
The SuMi TRUST Group formulated its Transition Plan toward Carbon Neutrality to steadily fulfill its “Carbon Neutral Commitment”. In fiscal 2024, we strengthened our solution capabilities through providing support by ERM SuMi TRUST Consulting and Japan Forest Asset, and

launching “New Trust Funds <Future Trust>”.

We will continue to tackle the issues of climate change, and will contribute to the decarbonization of our clients and society by leveraging our unique advisory, asset management, and asset administration functions.



*1 SuMi TRUST Bank carried out fact-finding surveys on various corporate efforts. "Governance Survey®" is one of the largest fact-finding surveys on corporate governance of domestic listed companies in Japan. (Conducted annually since 2017) "Real Estate ESG Survey" is a fact-finding survey on real estate owners' ESG efforts through investment and management. (Conducted annually since 2022)



2. Roadmap and Progress Toward Carbon Neutrality

	Baseline	2023	...	2030	2040	2050
(i) Net zero GHG emissions in investment & loan portfolio						
Established sectoral strategies	Power generation (intensity, g-CO ₂ e/kWh)	249	219		138~173	Net Zero
	Oil & Gas (reduction rate, Mt-CO ₂ e)	3.6	(38.9)%		(13)%~(31)%	
	Real estate (intensity, kg-CO ₂ e/m ²)	66	58		34~41	
	Shipping (Portfolio Climate Alignment)		+19.7% New (striving)		≤0%	
	Iron & Steel (reduction rate, Mt-CO ₂ e)	4.3	(30.2)%		(22)%~(27)%	
	Automotive Production (reduction rate, Kt-CO ₂ e)	224	(47.8)%		(47)%	
Automotive Products (intensity, g-CO ₂ e/vkm)	202	184		106~128		
(ii) Net zero GHG emissions in Asset Management portfolio						
SuMiTAM	Compared with Jun. 2021 (21.1)%			Halve intensity of 50% of assets under management*2 from 2019		
Nikko AM	(23.0)%			Halve intensity of 43% of assets under management*3 from 2019		
(iii) Net zero GHG emissions from Our Own Group Scope 1, 2 (t-CO₂e)						
		8,840		Net Zero		

*2 The target is 43 trillion yen, which is 50% of 85 trillion yen in assets under management as of the end of June 2021.

*3 The target is approximately 13 trillion yen, which is 43% of 31 trillion yen in assets under management as of the end of December 2021.

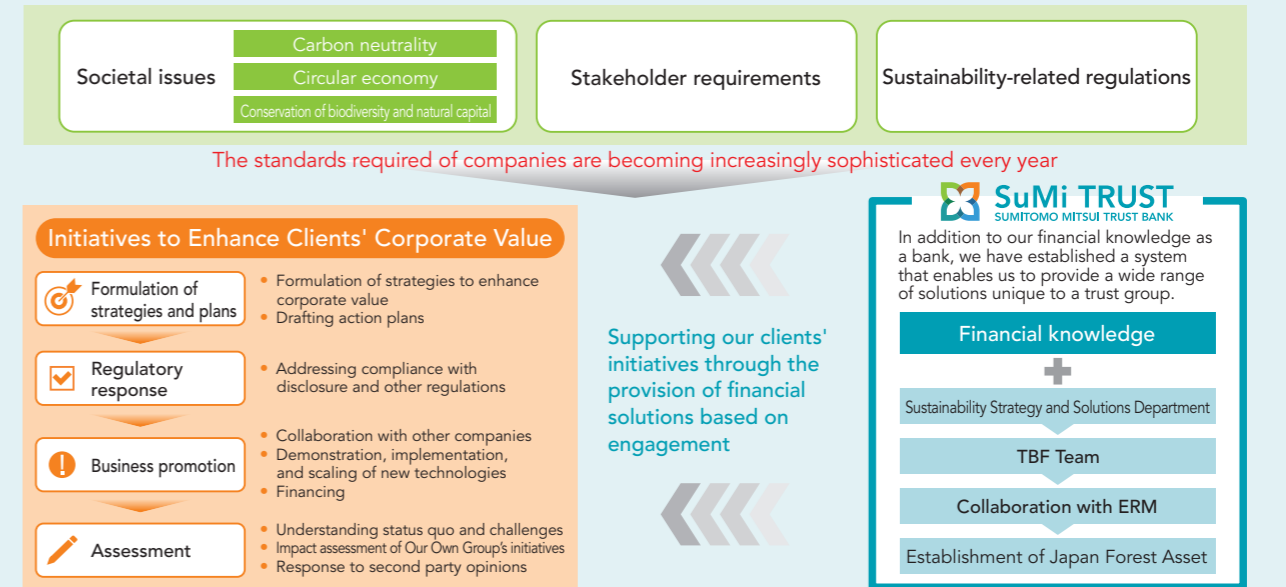
Providing Solutions to Clients

Amid growing concern over sustainability-related societal issues, expectations for and demands on companies are increasing year by year. For this reason, companies are required to formulate strategies and plans, comply with regulations, take actions at the implementation stage, and evaluate them.

SuMi TRUST Bank supports its clients' initiatives not only through financing but also through the TBF Team, which has expertise in technology and policy; the Sustainability Strategy and Solutions Department, which specializes in sustainability;

ERM SuMi TRUST Consulting, a joint venture with the ERM group, the world's largest sustainability consulting firms; and Japan Forest Asset, which aims to regenerate forests through reforestation of abandoned forests and logged areas, thereby strengthening the solution capabilities unique to a trust group

All of our Group companies continuously strengthen our client support system as one team, contributing to sustainable initiatives.



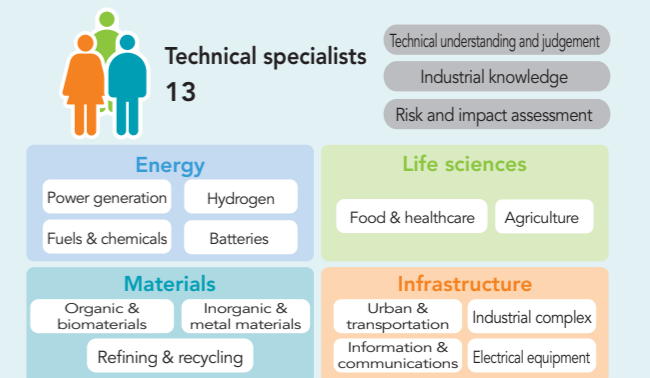
Technology-Based Finance (TBF) Team Initiatives

In 2021, SuMi TRUST Bank established the Technology-Based Finance (TBF) Team, centered on engineers to engage in financing based on technological perspective. The TBF Team was launched with five technical specialists, but has now 13 members as of the end of May 2025, who are targeting four societal issues: (1) decarbonization, (2) circular economy, (3) natural capital, and (4) healthy aging, and taking advantage of their expert knowledge in various fields.

One of the TBF Team's main activities is a verification work aimed at the social implementation of technology. For example, their six demonstration projects have been adopted by Japan's Ministry of the Environment and Ministry of Land, Infrastructure, Transport and Tourism, as the ministries' projects. They also engage in 13 collaborative research projects with 10 universities.

The TBF Team will continue to combine technology, pol-

icy, and finance to address societal issues (See also pages 31 and 32 of the "Climate Change Report 2024/2025" for details of the TBF Team's initiatives).



Progress of Our Approach to Carbon Neutrality

https://www.smtg.jp/english/-/media/tg/english/news/202506/Project_English_NetZero.pdf

Climate Change Report 2024/2025

https://www.smtg.jp/english/-/media/tg/english/sustainability/report/2024/climate_all.pdf